

# R21B SERIES

High Purity Low Flow Line Regulator

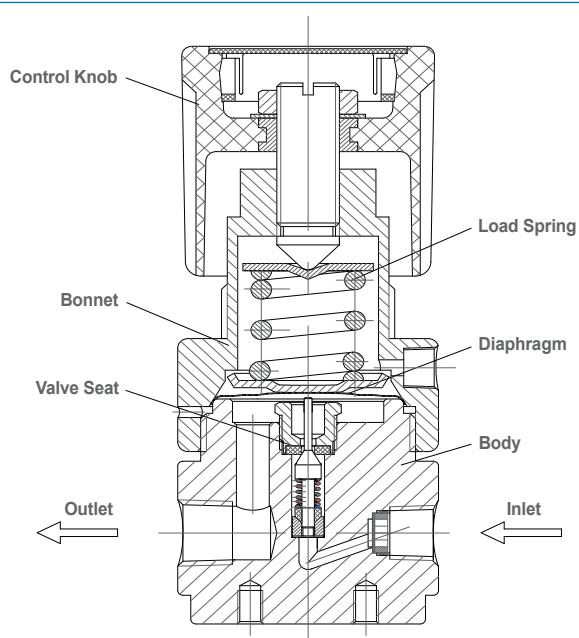
Specialty Gas Equipment



» R21BJT-FGK-11-11

## Materials

- |             |                              |
|-------------|------------------------------|
| • Body      | Nickel-Plated Brass Barstock |
| • Seat      | PTFE                         |
| • Diaphragm | 316L Stainless Steel         |
| • Stem      | 316L Stainless Steel         |
| • Spring    | 316L Stainless Steel         |



GENTEC® R21B Series Regulator is a Diaphragm-Sensed single-stage high purity line regulator designed for applications where low flow is desired.

## Product Features

- Single-Stage Configuration
- Metal-to-Metal Seal
- Inlet & Outlet Port Size: 1/4" NPT(F)
- 2" Pressure Gauge

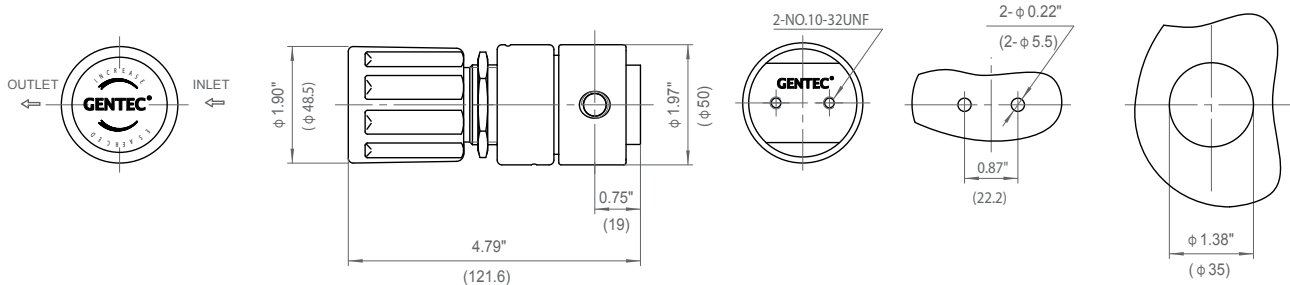
## Applications

- Semiconductor Industry
- Research Laboratories
- Process Analyzer
- Gas Chromatography
- Petrochemical Industry
- Power Plants

## Specifications

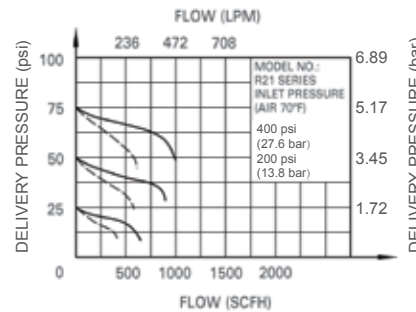
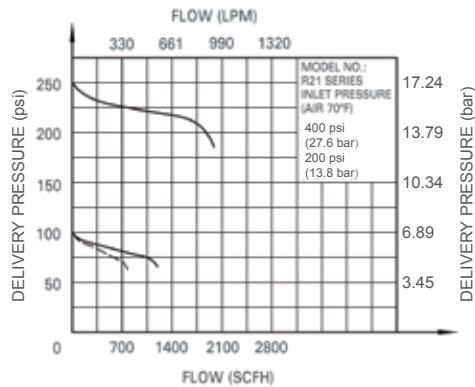
- **Maximum inlet pressure:** 500 psi (35 bar)
- **Maximum outlet pressure:** 250 psi (17 bar)
- **Safety test pressure:** 1.5 x Maximum inlet pressure
- **Temperature range:** -40 to 165°F (-40 to 74°C)
- **Inboard leakage:**  $2 \times 10^{-8}$  atm.cc/sec He
- **Outboard leakage:**  $2 \times 10^{-8}$  atm.cc/sec He
- **Maximum Cv:** 0.14
- **Weight:** 2.2 lb (0.82 kg)

## Dimensions

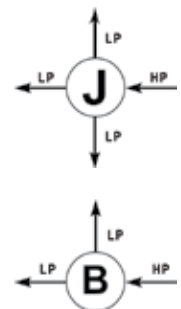


Rear Bracket Mount    Front Panel Mount  
Max. Thickness: 1/4" (7mm)

## Flow Data



## Body Port



## Ordering Information

EX:R21B	J	T -	F	G	K -	11 -	11	
Series	Body Ports	Seat	Inlet Pressure Range	Outlet Pressure Ranges	Gauge	Inlet Connections	Outlet Connections	Options
• R21B	J B	T: PTFE	F: 500 psi (35 bar)	G: 0-250 psi (17 bar) I: 0-100 psi (7 bar) K: 0-50 psi (3 bar) L: 0-25 psi (2 bar) Q: 30" Hg Vac-30 psi (2 bar) S: 30" Hg Vac-100 psi (7 bar) T: 30" Hg Vac-200 psi (14 bar)	P: psi / bar K: psi / kPa W: No Gauge	00: 1/4" NPT(F) 01: 1/4" NPT(M) 10: 1/8" GENLOK 11: 1/4" GENLOK 15: 6 mm GENLOK 16: 8 mm GENLOK Other connections available*	00: 1/4" NPT(F) 01: 1/4" NPT(M) 10: 1/8" GENLOK 11: 1/4" GENLOK 15: 6 mm GENLOK 16: 8 mm GENLOK Other connections available*	Blank: None D: Diaphragm Valve N: Needle Valve P: Panel Mount

\*: For more connection options contact Gentec.

# R22B SERIES

High Purity Medium Flow Line Regulator

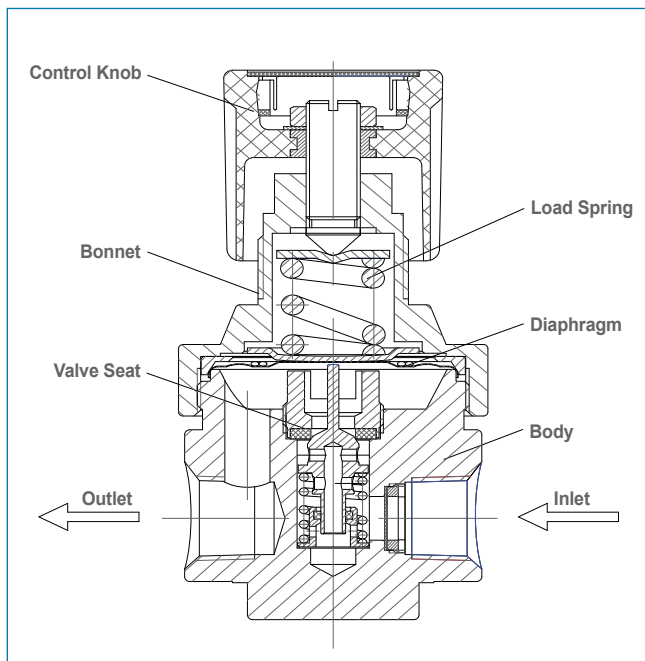
Specialty Gas Equipment



» R22BJ-DIP-13-13

## Materials

- |                  |                              |
|------------------|------------------------------|
| • Body           | Nickel-Plated Brass Barstock |
| • Bonnet         | Nickel-Plated Brass Barstock |
| • Seat           | PCTFE                        |
| • Diaphragm      | 316L Stainless Steel         |
| • Adjusting Knob | ABS Plastic                  |



GENTEC® R22B Brass Line Regulator is a diaphragm-sensed single-stage high purity regulator designed for applications where medium flow is desired.

## Product Features

- Single-Stage Configuration
- Metal-to-Metal Seal
- Inlet & Outlet Port Size: 1/2" NPT(F)
- 2" Pressure Gauge

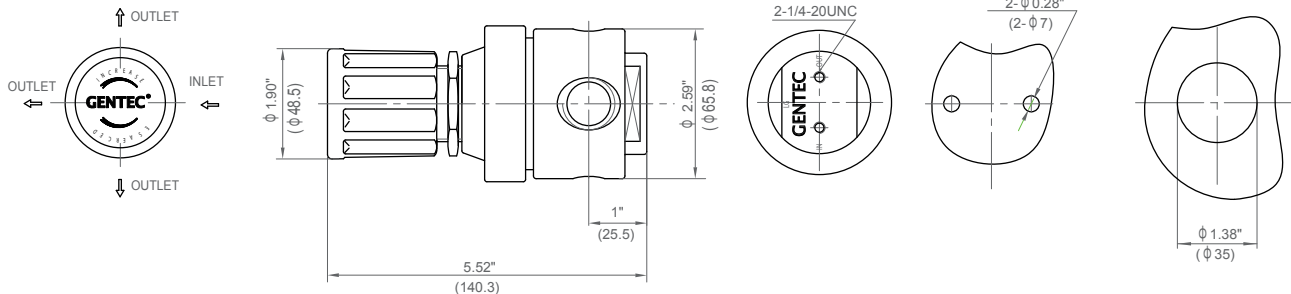
## Applications

- Semiconductor Industry
- Gas Manifold Systems
- Research Laboratories
- Petrochemical Industry
- Power Plants

## Specifications

- **Maximum inlet pressure:** 500 psi (35 bar)
- **Maximum outlet pressure:** 250 psi (17 bar)
- **Safety test pressure:** 1.5 x Maximum inlet pressure
- **Temperature range:** -40 to 165°F (-40 to 74°C)
- **Inboard leakage:**  $2 \times 10^{-8}$  atm.cc/sec He
- **Outboard leakage:**  $2 \times 10^{-8}$  atm.cc/sec He
- **Maximum Cv:** 1.1
- **Weight:** 3.74 lb (1.4 kg)

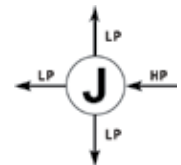
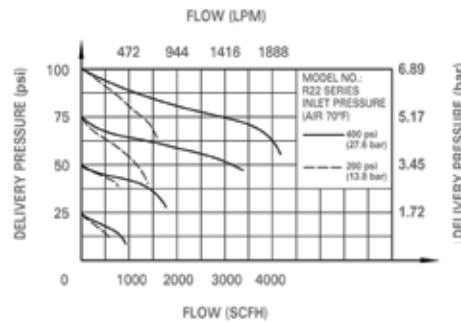
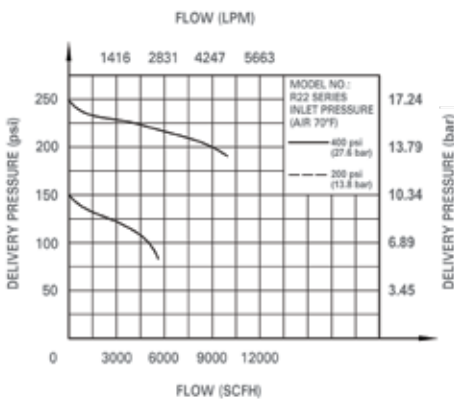
## Dimensions



Rear Bracket Mount    Front Panel Mount  
Max. Thickness: 1/4" (7mm)

## Flow Data

### Body Port



## Ordering Information

EX:R22B	J	K -	F	K	K -	13 -	13	Options
	Body Ports	Seat	Inlet Pressure Range	Outlet Pressure Ranges	Gauge	Inlet Connections	Outlet Connections	
• R22B	J	K: PCTFE	F: 500 psi (35 bar)	G: 0-250 psi (17 bar) I: 0-100 psi (7 bar) K: 0-50 psi (3 bar) L: 0-25 psi (2 bar) Q: 30" Hg Vac-30 psi (2 bar) S: 30" Hg Vac-100 psi (7 bar) T: 30" Hg Vac-200 psi (14 bar)	P: psi / bar K: psi / kPa W: No Gauge	04: 1/2" NPT(F) 05: 1/2" NPT(M) 13: 1/2" GENLOK Other connections available*	04: 1/2" NPT(F) 05: 1/2" NPT(M) 13: 1/2" GENLOK Other connections available*	Blank: None P: Panel Mount

\*: Please see page 83 for more inlet connection options such as DIN, BSP, CGA, and JIS.