



» R21SLJT-FIK-11-11

GENTEC® R21SL Series Stainless Steel Line Regulator is a diaphragm-sensed single-stage high purity line regulator.

Product Features

- Single-Stage Configuration
- Metal-to-Metal Seal
- Inlet & Outlet Port Size: 1/4" NPT(F)
- 2" Pressure Gauge

Materials

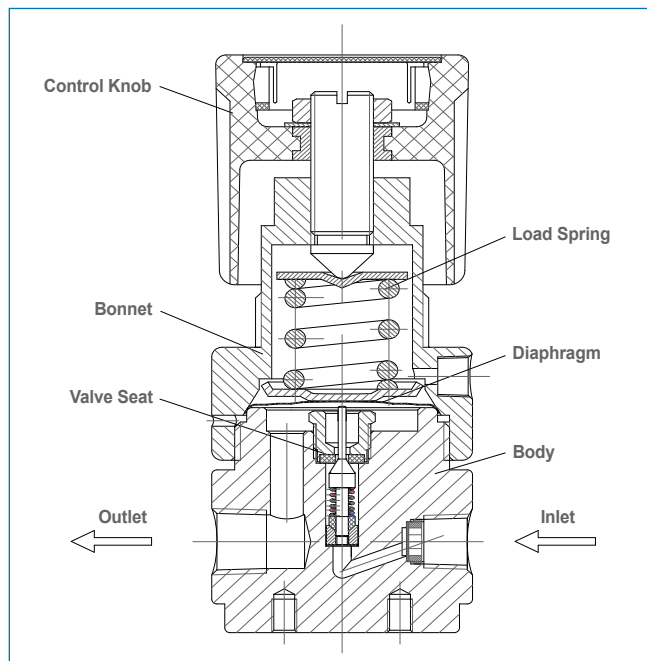
- | | |
|-------------|----------------------|
| • Body | 316L Stainless Steel |
| • Seat | PTFE |
| • Diaphragm | 316L Stainless Steel |
| • Stem | 316L Stainless Steel |
| • Spring | 316 Stainless Steel |

Applications

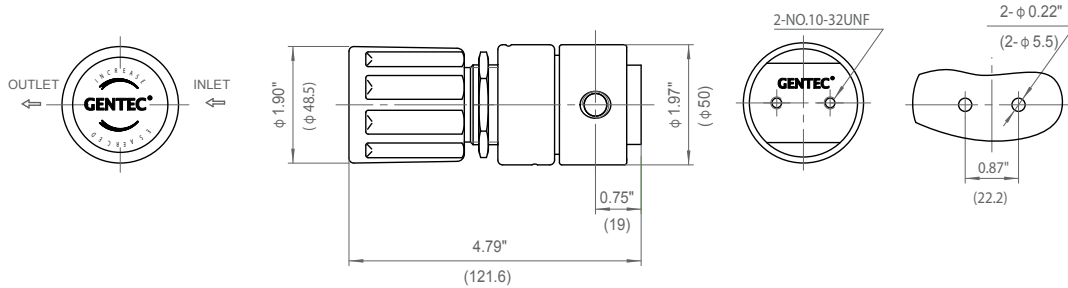
- Semiconductor Industry
- Research Laboratories
- Process Analyzer
- Gas Chromatography
- Petrochemical Industry
- Power Plants

Specifications

- **Maximum inlet pressure:** 500 psi (35 bar)
- **Maximum outlet pressure:** 250 psi (17 bar)
- **Safety test pressure:** 1.5 x Maximum inlet pressure
- **Temperature range:** -40 to 165°F (-40 to 74°C)
- **Inboard leakage:** 2×10^{-8} atm.cc/sec He
- **Outboard leakage:** 2×10^{-8} atm.cc/sec He
- **Maximum Cv:** 0.14
- **Weight:** 2.2 lb (0.82 kg)

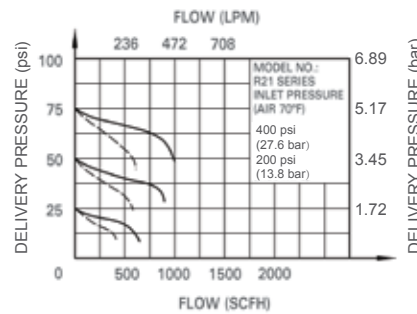
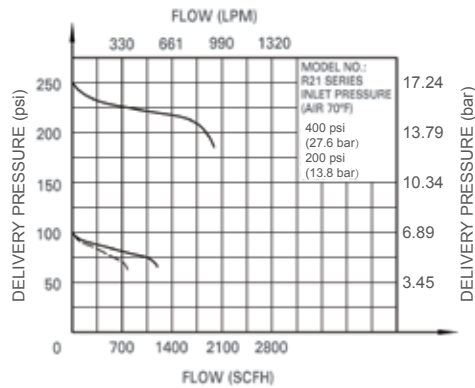


Dimensions

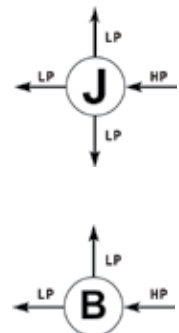


Rear Bracket Mount

Flow Data



Body Port



Ordering Information

EX:R21SL	J	T -	F	I	K -	11 -	11	
Series	Body Ports	Seat	Inlet Pressure Range	Outlet Pressure Ranges	Gauge	Inlet Connections	Outlet Connections	Options
• R21SL	J B	T: PTFE	F: 500 psi (35 bar)	G: 0-250 psi (17 bar) I: 0-100 psi (7 bar) K: 0-50 psi (3 bar) L: 0-25 psi (1.5 bar) Q: 30" Hg Vac-30 psi (2 bar) S: 30" Hg Vac-100 psi (7 bar) T: 30" Hg Vac-200 psi (14 bar)	P: psi / bar K: psi / kPa W: No Gauge	00: 1/4" NPT(F) 01: 1/4" NPT(M) 10: 1/8" GENLOK 11: 1/4" GENLOK 15: 6 mm GENLOK 16: 8 mm GENLOK Other connections available*	00: 1/4" NPT(F) 01: 1/4" NPT(M) 10: 1/8" GENLOK 11: 1/4" GENLOK 15: 6 mm GENLOK 16: 8 mm GENLOK Other connections available*	Blank: None D: Diaphragm Valve N: Needle Valve P: Panel Mount H: Hastelloy® Diaphragm

*: For more connection options contact Gentec.

R22SL SERIES

High Purity Medium Flow Regulator

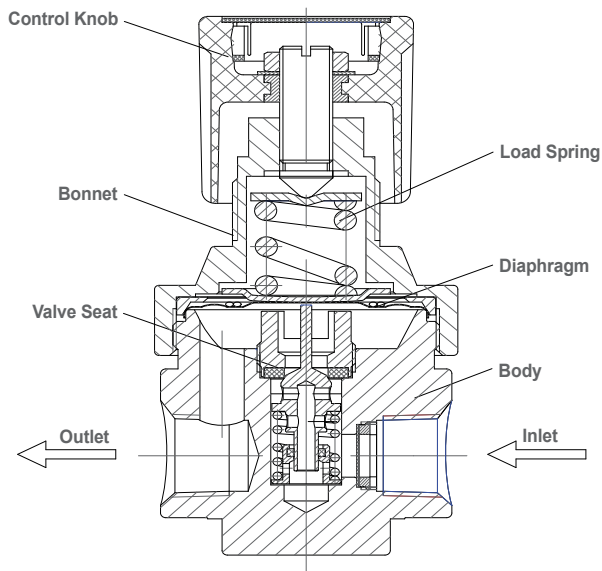
Specialty Gas Equipment



» R22SLJK-DIP-13-13

Materials

- **Body** 316 Stainless Steel
- **Bonnet** Nickel-Plated Brass Barstock
- **Seat** PCTFE
- **Diaphragm** 316L Stainless Steel
- **Adjusting Knob** ABS Plastic



GENTEC® R22SL Stainless Steel Regulator is a diaphragm-sensed single-stage high purity regulator designed for applications where medium flow is desired.

Product Features

- Single-Stage Configuration
- Metal-to-Metal Seal
- Inlet & Outlet Port Size: 1/2" NPT(F)
- 2" Pressure Gauge

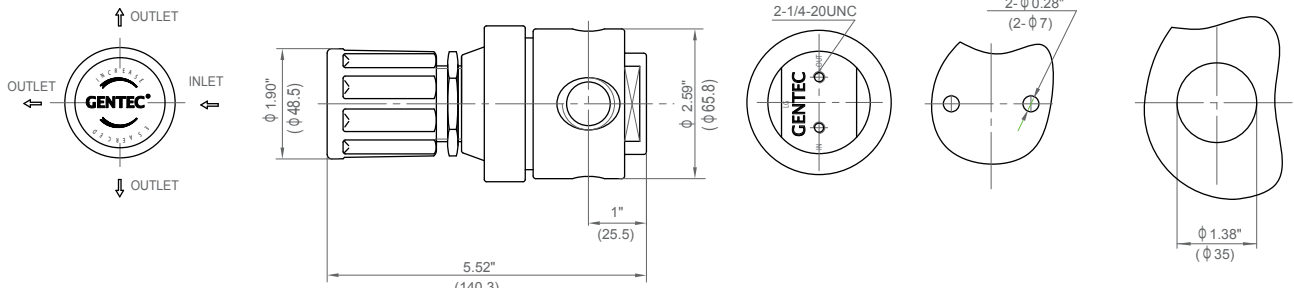
Applications

- Semiconductor Industry
- Gas Manifold Systems
- Research Laboratories
- Petrochemical Industry
- Power Plants

Specifications

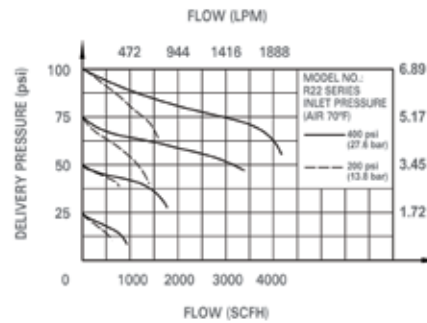
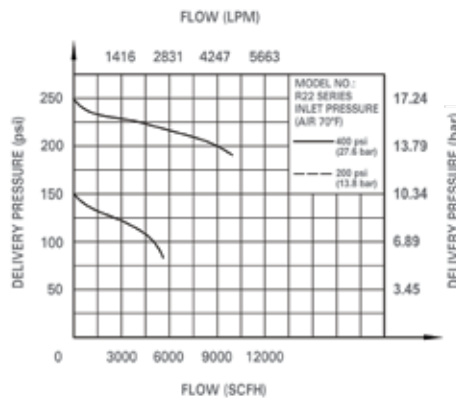
- **Maximum inlet pressure:** 3000 psi (206 bar)
- **Maximum outlet pressure:** 250 psi (17 bar)
- **Safety test pressure:** 1.5 x Maximum inlet pressure
- **Temperature range:** -40 to 165°F (-40 to 74°C)
- **Inboard leakage:** 2×10^{-8} atm.cc/sec He
- **Outboard leakage:** 2×10^{-8} atm.cc/sec He
- **Maximum Cv:** 1.1
- **Weight:** 3.74 lb (1.7 kg)

Dimensions

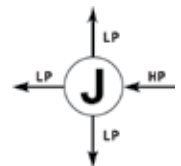


Rear Bracket Mount Front Panel Mount
Max. Thickness: 1/4" (7mm)

Flow Data



Body Port



Ordering Information

EX:R22SL	J	K -	F	G	K -	13 -	13	
Series	Body Ports	Seat	Inlet Pressure Range	Outlet Pressure Ranges	Gauge	Inlet Connections	Outlet Connections	Options
• R22SL	J	K: PCTFE	D: 3000 psi (206 bar) F: 500 psi (35 bar)	G: 0-250 psi (17 bar) I: 0-100 psi (7 bar) K: 0-50 psi (3 bar) L: 0-25 psi (1.5 bar) Q: 30" Hg Vac-30 psi (2 bar) S: 30" Hg Vac-100 psi (7 bar) T: 30" Hg Vac-200 psi (14 bar)	P: psi / bar K: psi / kPa W: No Gauge	04: 1/2" NPT(F) 05: 1/2" NPT(M) 13: 1/2" GENLOK 15: 6 mm GENLOK 16: 8 mm GENLOK 18: 12 mm GENLOK Other connections available*	04: 1/2" NPT(F) 05: 1/2" NPT(M) 13: 1/2" GENLOK 15: 6 mm GENLOK 16: 8 mm GENLOK 18: 12 mm GENLOK Other connections available*	Blank: None P: Panel Mount H: Hastelloy® Diaphragm

*: For more connection options contact Gentec.

R23SL SERIES

High Purity High Flow Line Regulator

Specialty Gas Equipment



» R23SLJK-DHW-06-06

GENTEC® R23 Series Regulator is a stainless steel diaphragm-sensed single-stage “High Purity-style” regulator, designed for applications where high flow is desired. Available in stainless steel.

Product Features

- Single-Stage Configuration
- Metal-to-Metal Seal
- Inlet & Outlet Port Size: 3/4” NPT(F)
- 2” Pressure Gauge

Materials

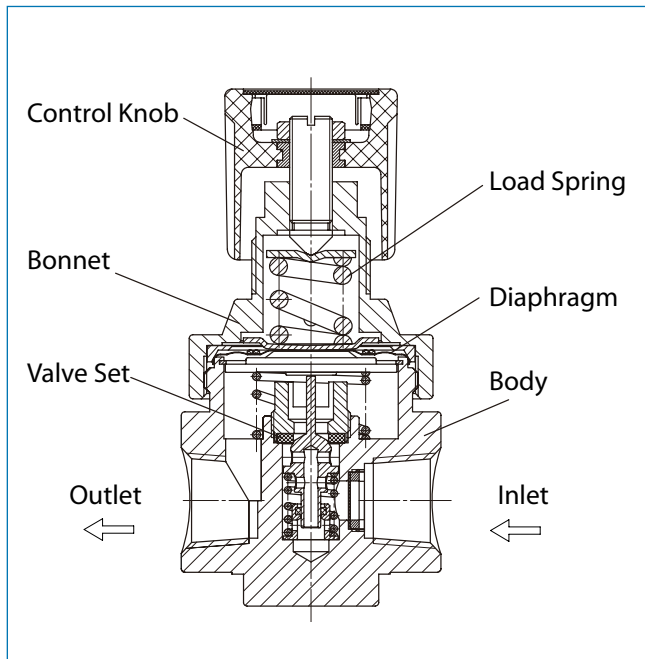
- | | |
|-------------|------------------------------|
| • Body | Nickel-Plated Brass Barstock |
| • Seat | PCTFE |
| • Diaphragm | 316L Stainless Steel |
| • Stem | 316L Stainless Steel |
| • Spring | 316L Stainless Steel |

Applications

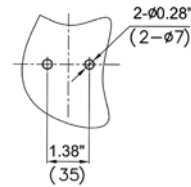
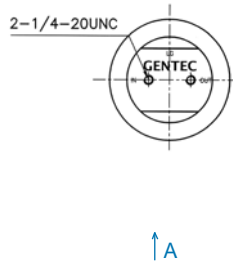
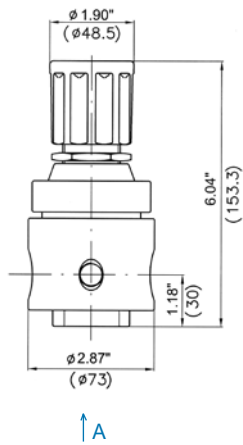
- Purging Systems
- Specialty Gas
- Pressure Control Facilities
- Gas Control Box

Specifications

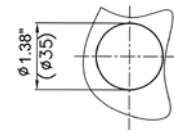
- **Maximum inlet pressure:** 3000 psi (206 bar)
- **Maximum outlet pressure:** 150 psi (10 bar)
- **Safety test pressure:** 1.5 x Maximum inlet pressure
- **Temperature range:** -40 to 165°F (-40 to 74°C)
- **Inboard leakage:** 2×10^{-8} atm.cc/sec He
- **Outboard leakage:** 2×10^{-8} atm.cc/sec He
- **Maximum Cv:** 1.8
- **Weight:** 6.0 lb (2.7 kg)



Dimensions

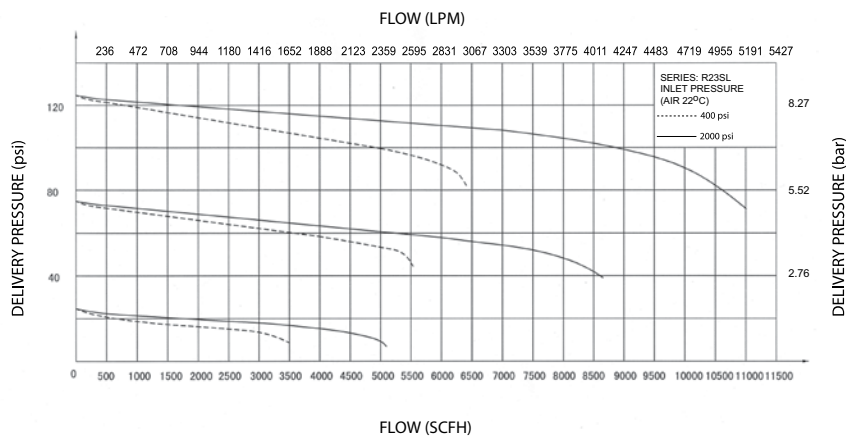


Rear Bracket Mount

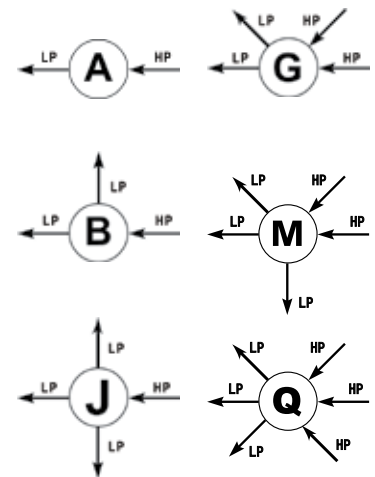


Front Panel Mount
Max. Thickness: 1/4" (7mm)

Flow Data



Body Port



Ordering Information

EX: R23SL	J	K -	D	I	W -	06 -	06 -	D
Series	Body Ports	Seat	Inlet Pressure Range	Outlet Pressure Ranges	Gauge	Inlet Connections	Outlet Connections	Options
• R23SL	A B J G M Q	K: PCTFE	D: 3000 psi (206 bar) F: 500 psi (35 bar)	H: 0-150 psi (10 bar) I: 0-100 psi (7 bar) J: 0-75 psi (5 bar) L: 0-25 psi (1.5 bar) M: 0-15 psi (1 bar)	W: No Gauge	06: 3/4" NPT(F) Other connections available*	06: 3/4" NPT(F) Other connections available*	P: Panel Mount H: Hastelloy® Diaphragm

*: Please see page 83 for more inlet connection options such as DIN, BSP, CGA, and JIS.