

# R31 SERIES

Dual Stage Regulator

Solutions for Life

GENTEC® R31 Series Regulator is a diaphragm-sensed dual-stage high purity regulator designed for applications where a consistent outlet pressure and flow are desired.



» R31SLMK-DIK-C350-11-D

## Applications

- Research Laboratories
- Gas Chromatography
- Process Analyzers
- Petrochemical Industry
- Power Plant

## Product Features

- Dual-Stage Configuration
- Metal-to-Metal Seal
- Inlet & Outlet Port Size: 1/4" NPT(F)
- 2" Pressure Gauge

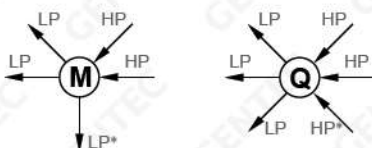
## Materials

- **Body:** 316L Stainless Steel, Nickel-Plated Brass
- **Bonnet:** Stainless Steel
- **Seat:** PCTFE, PTFE, Vespel®
- **Diaphragm:** 316L Stainless Steel, Hastelloy®
- **Adjusting Knob:** ABS Plastic

## Specifications

- **Maximum inlet pressure:** 4500 psi (310 bar)
- **Maximum outlet pressure:** 250 psi (17 bar)
- **Safety test pressure:** 1.5 x Maximum inlet pressure
- **Temperature range:** -40 to 165°F (-40 to 74°C)
- **Inboard leakage:**  $2 \times 10^{-8}$  atm.cc/sec He
- **Outboard leakage:**  $2 \times 10^{-8}$  atm.cc/sec He
- **Maximum Cv:** 0.08
- **Weight:** 4.0 lb (1.8 kg)

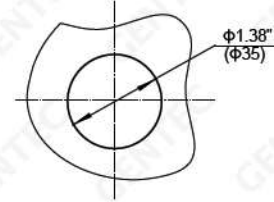
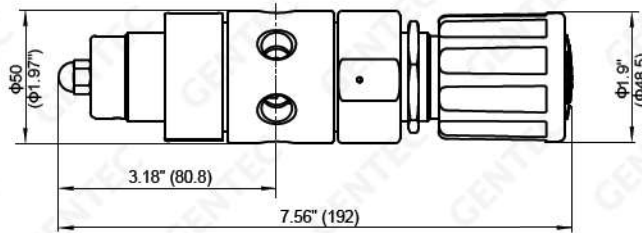
## Body Port



\* For R31 Series, the "Aux." port is plugged. This port can be used for purging purpose only.

\* For the "Aux." port of R31 Series, this port is plugged and cannot be used for relief valve installation.

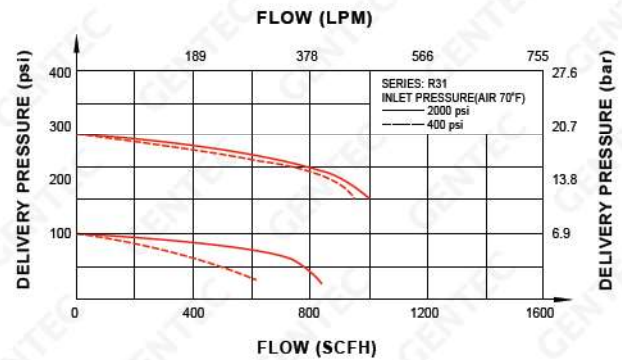
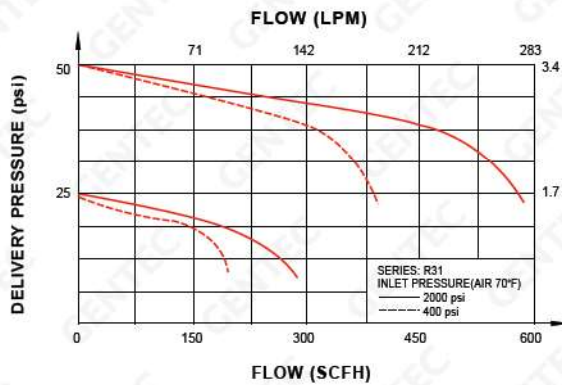
## Dimensions



Front Panel Mount  
Max. Thickness: 1/4" (7mm)

Dimensions: in (mm)

## Flow Data



## Ordering Information

EX:R31SL	M	K -	D	I	K -	C350 -	11 -	D
Series	Body Ports	Seat	Inlet Pressure Range	Outlet Pressure Ranges	Gauge	Inlet Connections	Outlet Connections	Options
<ul style="list-style-type: none"> <li><b>R31B</b> (Brass)</li> <li><b>R31SL</b> (316L)</li> </ul>	M Q	K: PCTFE T: PTFE V: VespeI®	C: 4500 psi (310 bar) D: 3000 psi (206 bar) F: 500 psi (35 bar)	G: 0-250 psi (17 bar) H: 0-150 psi (10 bar) I: 0-100 psi (7 bar) K: 0-50 psi (3 bar) L: 0-25 psi (1.5 bar) Q: 30" Hg Vac-30 psi (2 bar) S: 30" Hg Vac-100 psi (7 bar) T: 30" Hg Vac-200 psi (14 bar)	P: psi / bar K: psi / kPa W: No Gauge	00: 1/4" NPT(F) C330: CGA330 C350: CGA350 C580: CGA580 C660: CGA660 C590: CGA590 DN05: DIN477 No.5 BS02: BS341 No.2 Other connections available*	00: 1/4" NPT(F) 01: 1/4" NPT(M) 10: 1/8" GENLOK 11: 1/4" GENLOK 15: 6 mm GENLOK 16: 8 mm GENLOK 14B: 1/4" Hose Barb Other connections available*	Blank: None D: Diaphragm Valve N: Needle Valve P: Panel Mount R: Relief Valve H: Hastelloy® Diaphragm

\*: Please see page 83 for more inlet connection options such as DIN, BSP, CGA, and JIS.